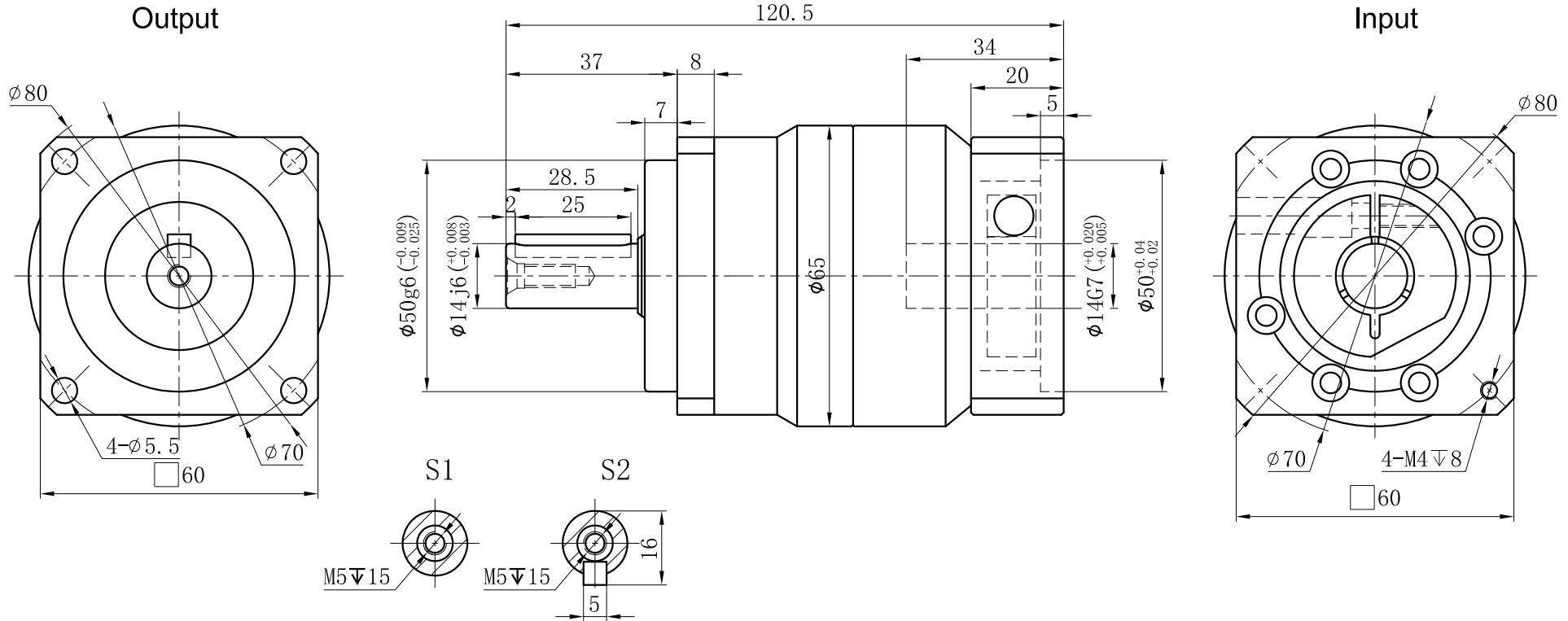


Customer Name:



Transmission Ratio	(<u> A</u>):1	Mass Moments Of Inertia	(<u> B</u>)Kg.cm ²
Rated Output Torque	(<u> C</u>)Nm	Max Output Torque	(<u> D</u>)Nm
Rated Input Speed	3000rpm	Max Input Speed	5000rpm
Max Radial Force	1530N	Max.axial Force	765N
Efficiency	$\geq 97\%$	Operating Temperature	-20°~+90°
Mounting Position	Any	Lubrication Method	Synthetic grease
Weight $\pm 3\%$	1.3Kg	Service Life	20000h
Standard Backlash	≤ 5 arcmin	Protection Class	IP65
Motor Power	-- KW	Noise Level	58dB
Motor Dimensions			

	10	0.13	35	63	Sign/Date						
	8	0.13	45	81			7	0.13	45	81	
	6	0.13	50	90			5	0.13	55	99	
	4	0.14	45	81			3	0.16	40	72	
Ratio	A	B	C	D		Ratio	A	B	C	D	
Note						Precision Planetary Reducer	GCB060A				
Mark	No.	Sign	Date				GCB060A-L1				
							Shaft Type	Precision			

Above specifications are for standard reducer and may be subject to change without notice.