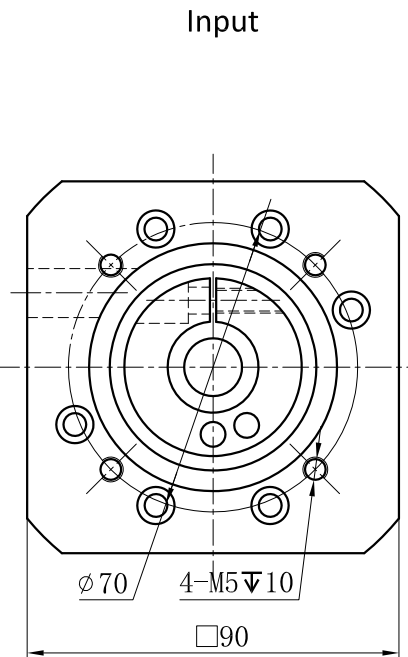
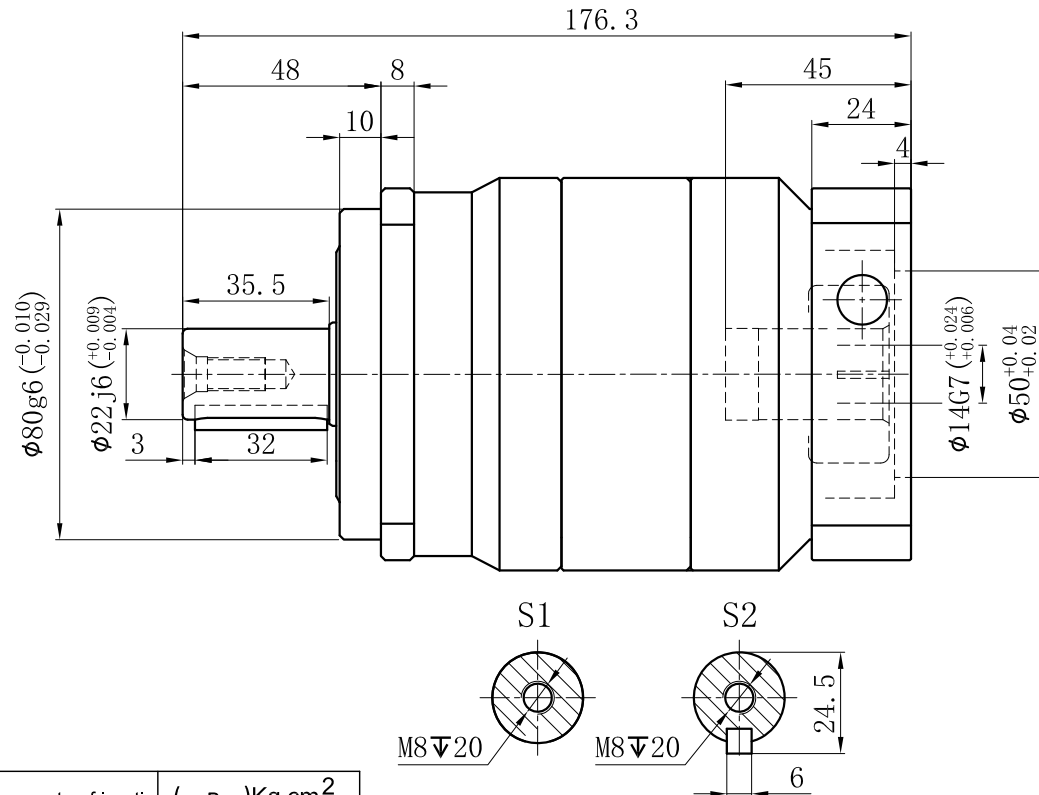
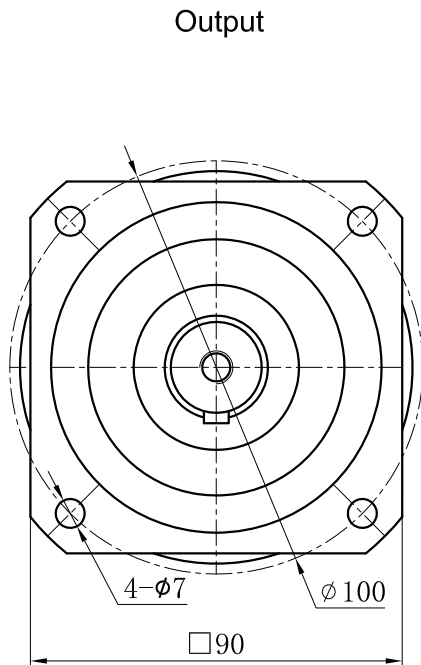


Customer name:



Transmission ratio	(A):1	Mass moments of inertia	(B)Kg.cm ²
Rated output torque	(C)Nm	Max.output torque	(D)Nm
Rated input speed	3000rpm	Max input speed	5000rpm
Max.radial force	3250N	Max.axial force	1625N
Efficiency	≥ 94%	Operating temperature	-20°~+90°
Mounting position	Any	Lubrication method	Synthetic grease
Weight ±3%	5.1Kg	Service life	20000h
Standard backlash	≤ -- arcmin	Protection class	IP65
Motor power		Noise level	63dB
Motor dimensions			

	40	0.13	120	215	Sign/Date						
	35	0.13	135	240			100	0.13	100	180	
	30	0.13	140	250			80	0.13	120	215	
	25	0.13	150	270			70	0.13	135	240	
	20	0.13	110	195			60	0.13	140	250	
	15	0.13	100	180			50	0.13	150	270	
Ratio	A	B	C	D		Ratio	A	B	C	D	
Note						Precision planetary reducer	GCB090				
Ø19-Ø14 Bushing	Mark	No.	Sign	Date			GCB090-L2				
							Shaft Type	Precision			

Above specifications are for standard reducer and may be subject to change without notice.