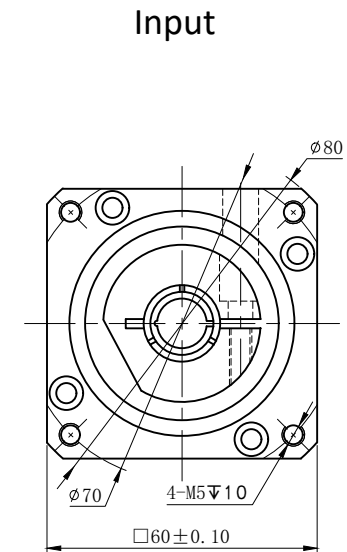
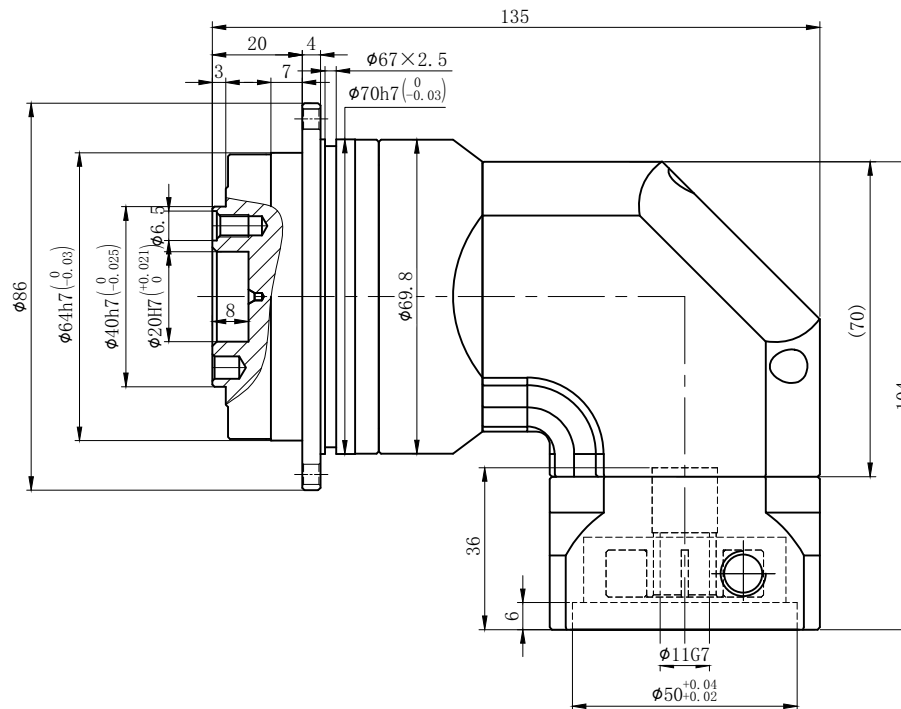
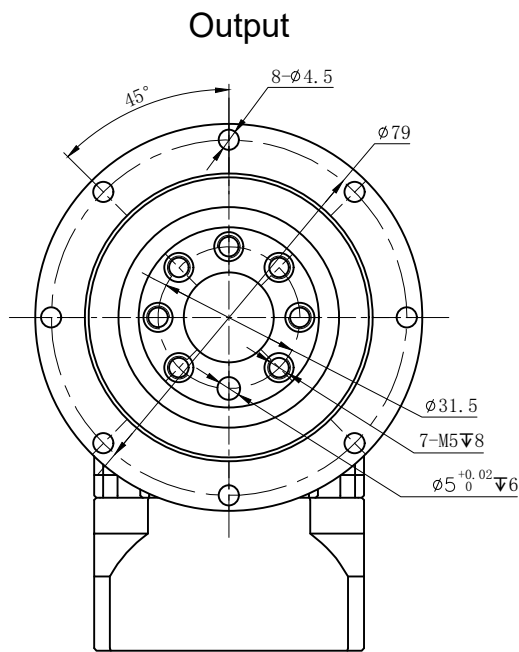



Customer Name:



Transmission Ratio	(<u> A</u>):1	Mass Moments Of Inertia	(<u> B</u>)Kg.cm ²
Rated Output Torque	(<u> C</u>)Nm	Max Output Torque	(<u> D</u>)Nm
Rated Input Speed	3000rpm	Max Input Speed	6000rpm
Max.Bending Moment	125Nm	Max Axial Force	1050N
Efficiency	≥ 92%	Operating Temperature	-20~+90°
Mounting Position	Any	Lubrication Method	Synthetic grease
Weight ±3%	2.4Kg	Service Life	30000h
Standard Backlash	≤ 6 arcmin	Protection Class	IP65
Motor Power	-- KW	Noise Level	63dB
Motor Dimensions			

	25	0.09	60	108	Sign/Date					
	35	0.09	50	90						
	40	0.09	48	86						
	50	0.09	60	108						
	70	0.09	50	90						
	100	0.09	40	72						
	Ratio	A	B	C	D	Ratio	A	B	C	D
Note						Precision Planetary Reducer				GDR064
φ14 to φ11	Mark	No.	Sign	Date						GDR064-L2
		DRAW								
		CHEC								
		APPR								
		RULE				Shaft Type	Precision			

Above specifications are for standard reducer and may be subject to change without notice.