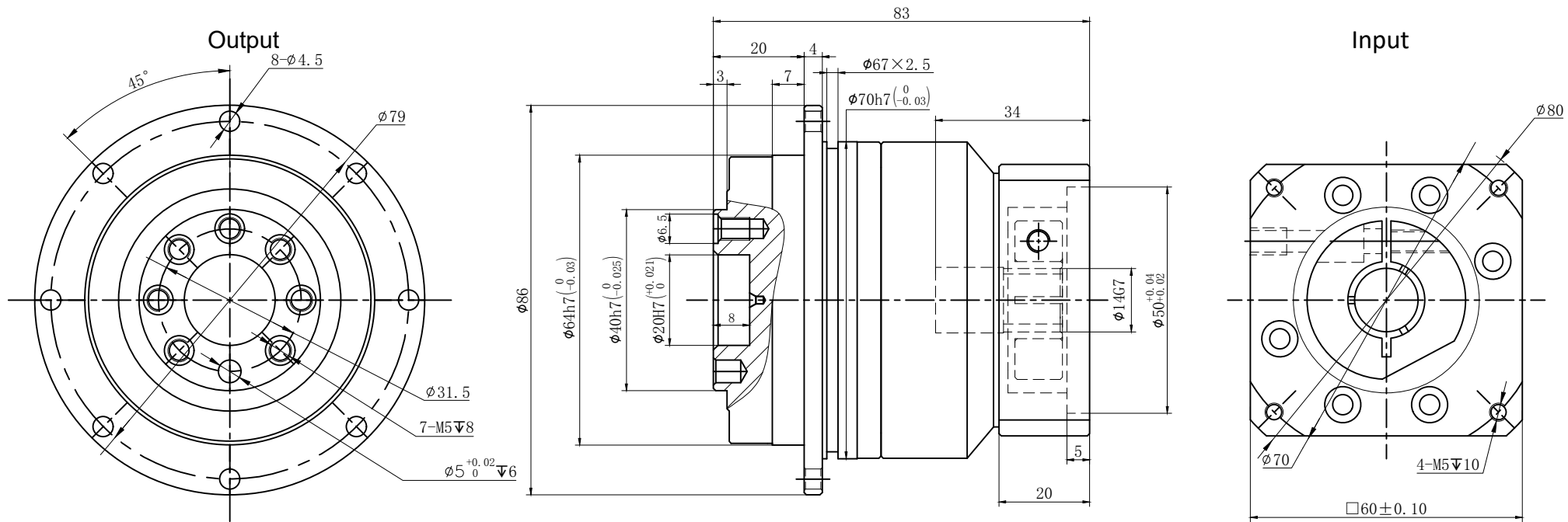


Customer Name:



Transmission Ratio	(A):1	Mass Moments Of Inertia	(B)Kg.cm ²
Rated Output Torque	(C)Nm	Max Output Torque	(D)Nm
Rated Input Speed	5000rpm	Max Input Speed	10000rpm
Max Bending Moment	125N	Max Axial Force	1050N
Efficiency	≥ 97%	Operating Temperature	-20°~+90°
Mounting Position	Any	Lubrication Method	Synthetic grease
Weight ±3%	1.3Kg	Service Life	30000h
Standard Backlash	≤ 5 arcmin	Protection Class	IP65
Motor Power		Noise Level	58dB
Motor Dimensions			

	10	0.13	40	72	Sign/Date					
	7	0.13	50	90						
	5	0.13	60	108						
	4	0.14	48	86						
Ratio	A	B	C	D		Ratio	A	B	C	D
Note						Precision Planetary Reducer	GD064			
	Mark	No.	Sign	Date			GD064-L1			
		DRAW					Shaft Type	Precision		
		CHEC								
		APPR								
		RULE								

Above specifications are for standard reducer and may be subject to change without notice.