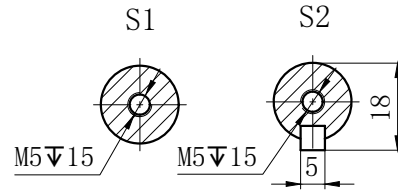
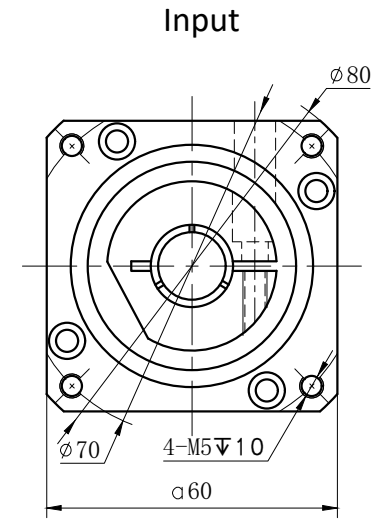
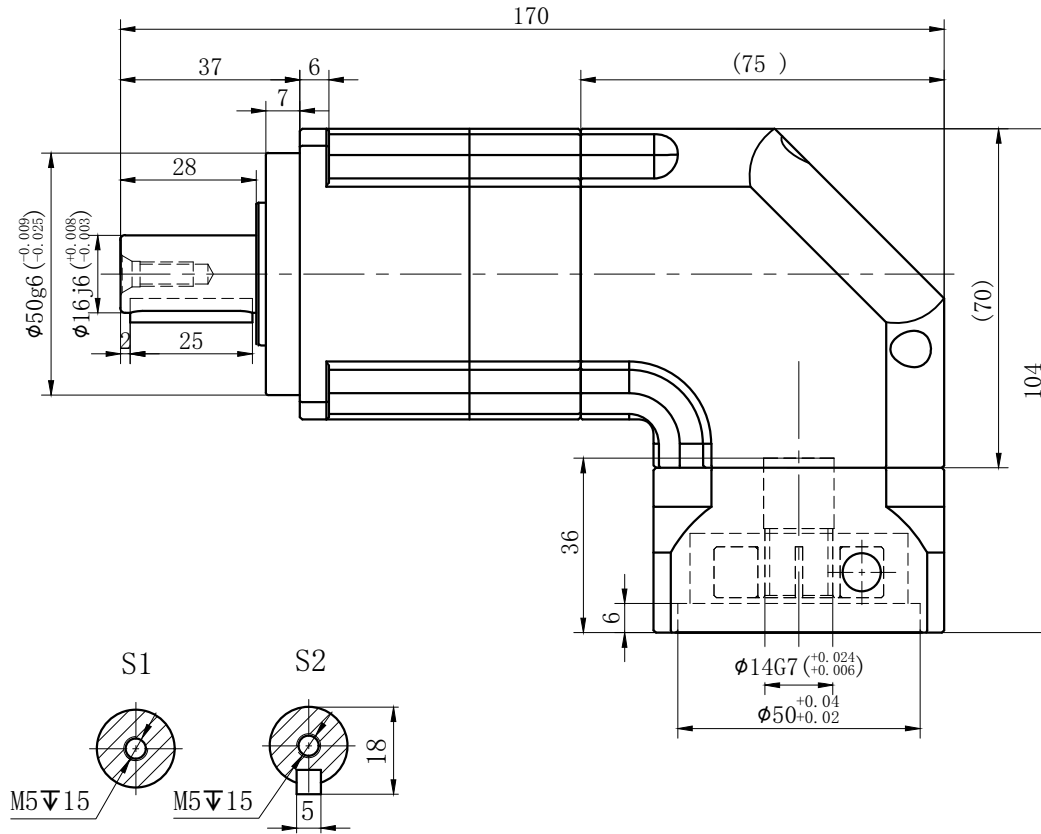
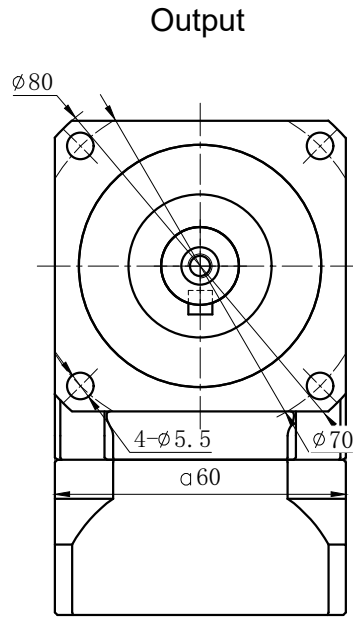


Customer Name:



Transmission Ratio	( <u>A</u> ):1	Mass Moments Of Inertia	( <u>B</u> )Kg.cm <sup>2</sup>	25	0.09	60	108	Sign/Date	80	0.09	45	81	
Rated Output Torque	( <u>C</u> )Nm	Max Output Torque	( <u>D</u> )Nm	30	0.09	55	99		100	0.09	40	72	
Rated Input Speed	3000rpm	Max Input Speed	6000rpm	35	0.09	50	90		120	0.09	50	90	
Max Radial Force	1530N	Max Axial Force	765N	40	0.09	45	81		140	0.09	55	99	
Efficiency	≥ 92%	Operating Temperature	-20°~+90°	50	0.09	60	108		160	0.09	55	99	
Mounting Position	Any	Lubrication Method	Synthetic grease	60	0.09	55	99		200	0.09	40	72	
Weight ±3%	2.58Kg	Service Life	20000h	70	0.09	50	90						
Standard Backlash	≤ 9 arcmin	Protection Class	IP65	Ratio	A	B	C	D	Ratio	A	B	C	D
Motor Power	-- KW	Noise Level	63dB	Note					Precision Planetary Reducer	GBR060			
Motor Dimensions				Mark	No.	Sign	Date			GBR060-L2			
										Shaft Type	Precision		

Above specifications are for standard reducer and may be subject to change without notice.