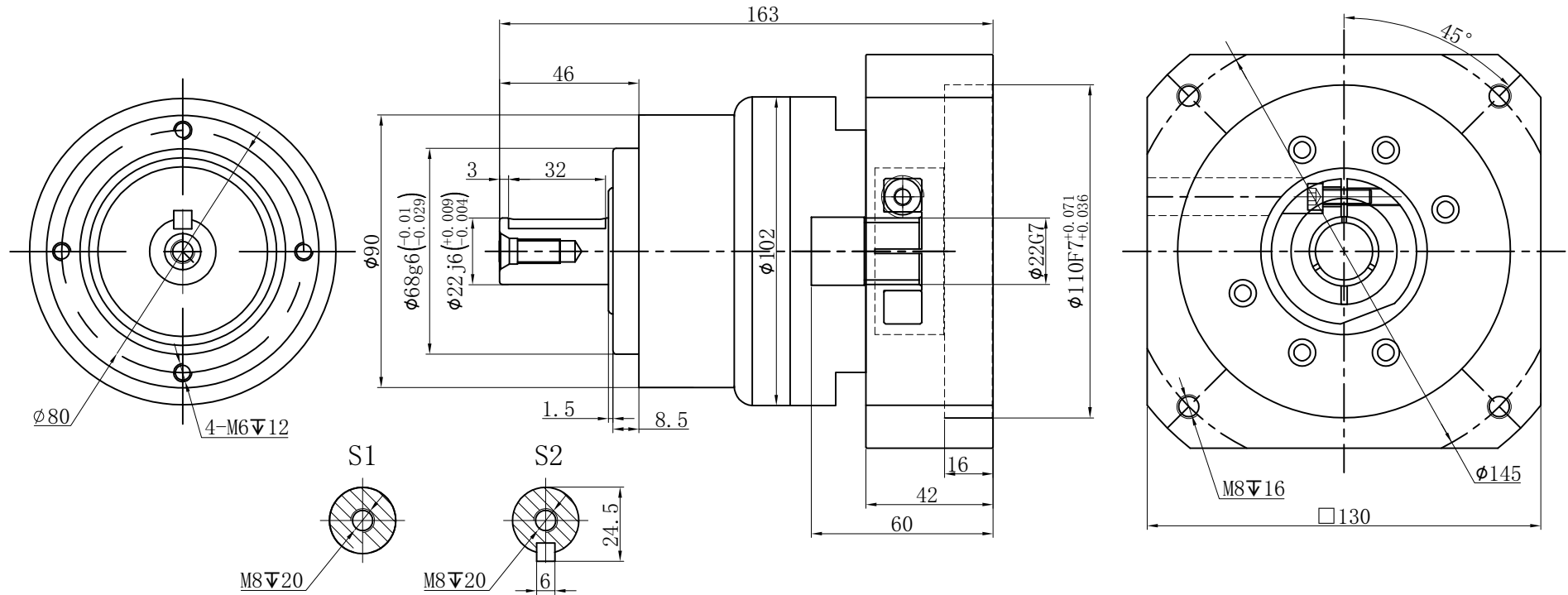


Customer name:

Output

Input



Transmission ratio	( A ):1	Mass moments of inertia	( B )Kg.cm <sup>2</sup>
Rated output torque	( C )Nm	Max.output torque	( D )Nm
Rated input speed	4000rpm	Max input speed	8000rpm
Max.radial force	2985N	Max.axial force	1625N
Efficiency	≥ 97%	Operating temperature	-20°~+90°
Mounting position	Any	Lubrication method	Synthetic grease
Weight ±3%	3.3Kg	Service life	20000h
Standard backlash	≤ 5 arcmin	Protection class	IP65
Motor power		Noise level	60dB
Motor dimensions			

	10	0.44	100	180	Sign/Date		8	0.44	120	216
	7	0.45	140	252			6	0.45	150	270
	5	0.47	160	280			3	0.61	130	234
	4	0.48	140	252						
Ratio	A	B	C	D		Ratio	A	B	C	D
Note						Precision planetary reducer	GE090			
Mark	No.	Sign	Date				GE090-L1			
	DRAW						Shaft Type	Precision		
	CHEC									
	APPR									
	RULE									

Above specifications are for standard reducer and may be subject to change without notice.