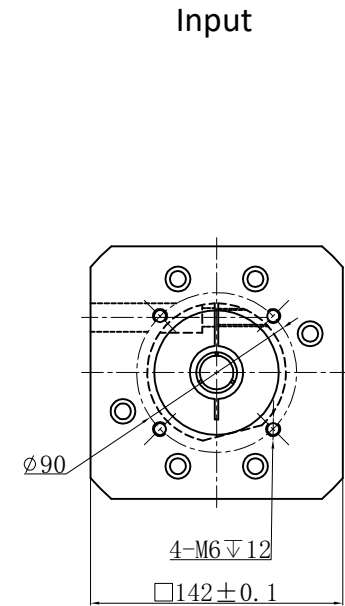
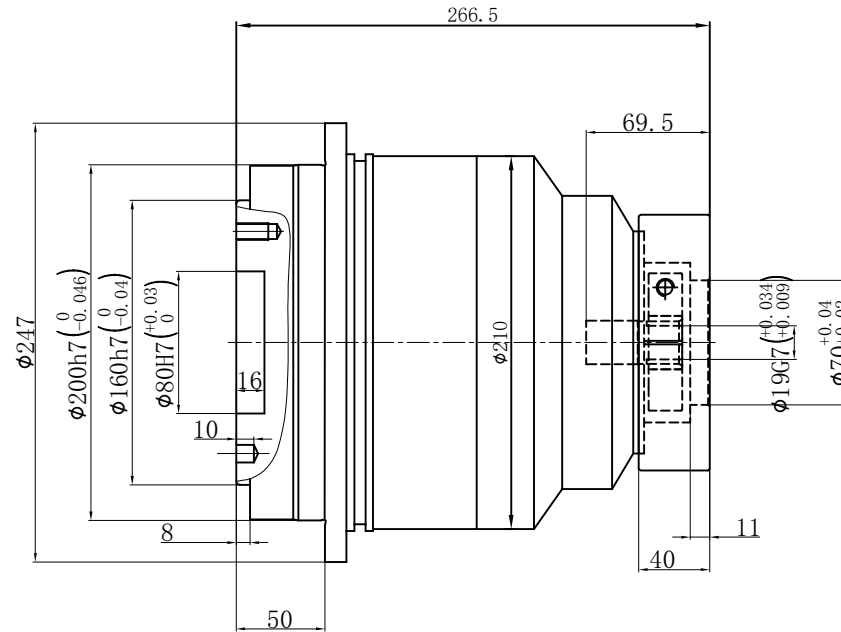
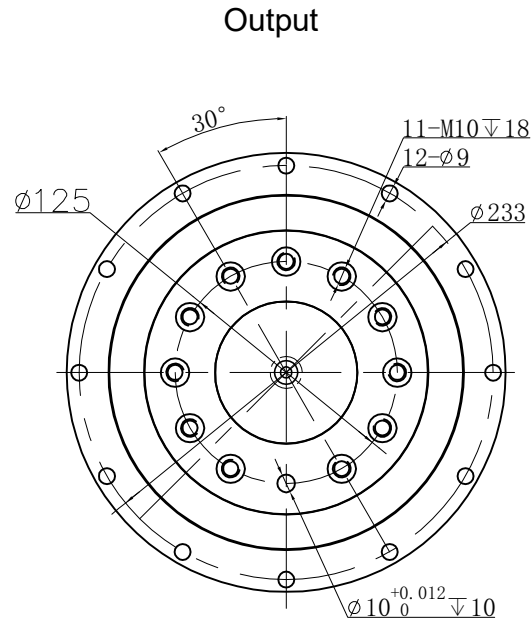


Customer name:



Transmission ratio	(A):1	Mass moments of inertia	(B)Kg.cm ²															
Rated output torque	(C)Nm	Max.output torque	(D)Nm	70	7.03	1100	1980	Sign/Date										
Rated input speed	3000rpm	Max input speed	6000rpm	50	7.03	1200	2160											
Max Bending Moment	3064NM	Max.axial force	16660N	40	7.03	1100	1980											
Efficiency	≥ 94%	Operating temperature	-20~+90°	35	7.42	1100	1980											
Mounting position	Any	Lubrication method	Synthetic grease	25	7.42	1200	2160											
Weight ±3%	37Kg	Service life	20000h	20	7.42	1050	1890											
Standard backlash	≤ 5 arcmin	Protection class	IP65															
Motor power		Noise level	68dB															
Motor dimensions																		

Ratio	A	B	C	D						Ratio	A	B	C	D
	100	7.42	900	1620										

Note									Precision planetary reducer	GD200
∅24-∅19	Mark	No.	Sign	Date						GD200-L2
	DRAW								Shaft Type	Precision
	CHEC									
	APPR									
	RULE									

Above specifications are for standard reducer and may be subject to change without notice.