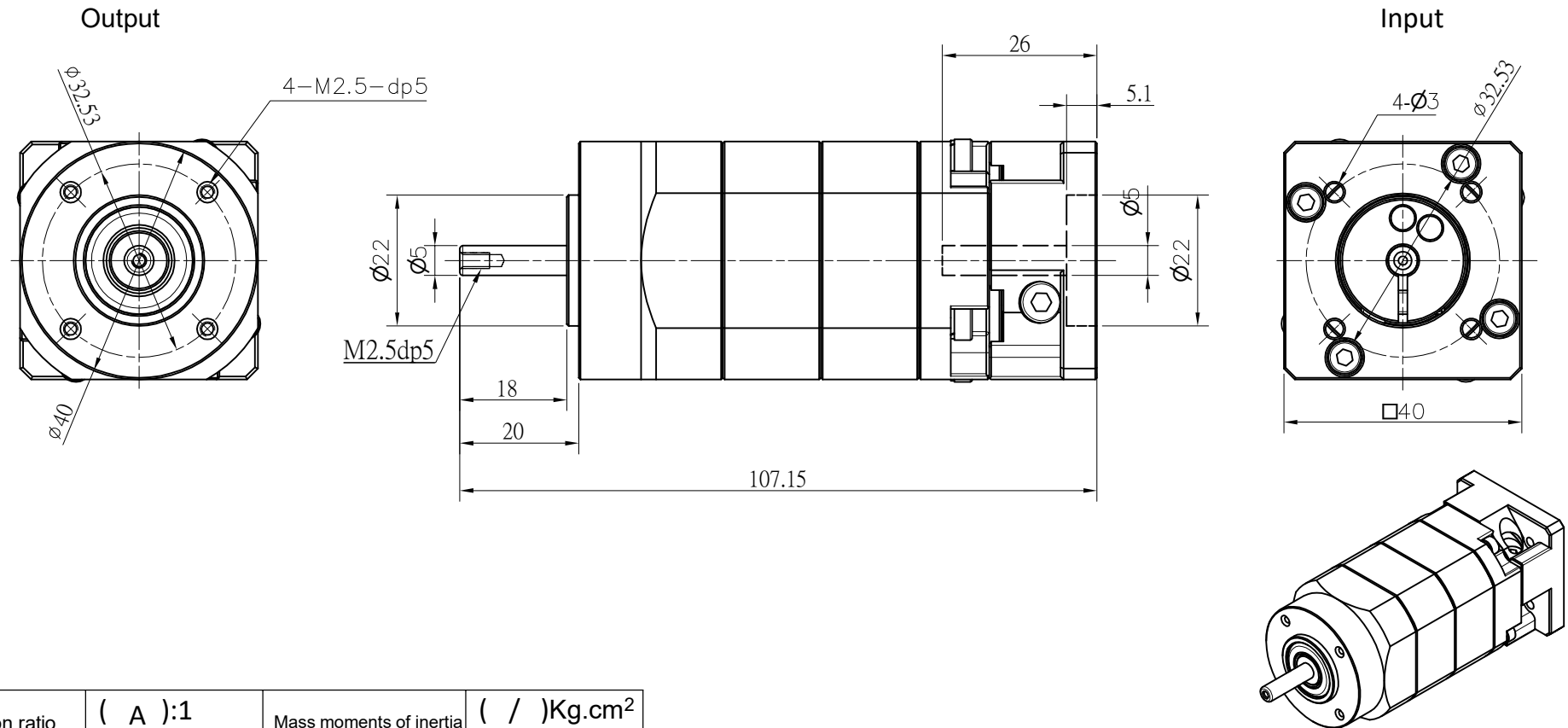






Customer name:



Transmission ratio	(<u> A </u>):1	Mass moments of inertia	(<u> / </u>)Kg.cm ²												
Rated output torque	(<u> C </u>)Nm	Max.Output torque	(<u> D </u>)Nm						Sign/Date						
Rated input speed	3000rpm	Max input speed	/												
Max.radial force	/	Max.axial force	/												
					100		13	39							
Efficiency	≥ 94%	Operating temperature	-20°~+90°	Ratio	A	B	C	D		Ratio	A	B	C	D	
Mounting position	Any	Lubrication method	Synthetic grease	NOTE						Precision Planetary Reducer			GAE040		
Weight ±3%	--Kg	Service life	20000h												
Standard backlash	≤ 12 arcmin	Protection class	IP65		Mark	No.	Sign	Date		GAE040-L2-A6					
Motor power		Noise level	60dB												
Motor dimensions							DRAW					Shaft Type	Precision		
							CHEC								
						APPR									
						RULE									

Above specification are for standard reducer, No standard reducer only for reference