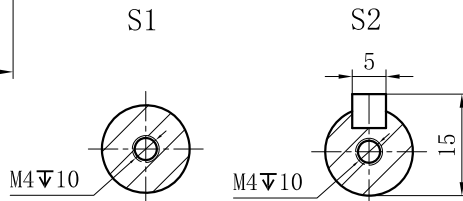
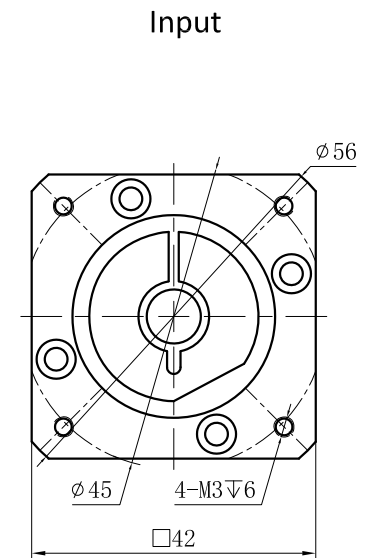
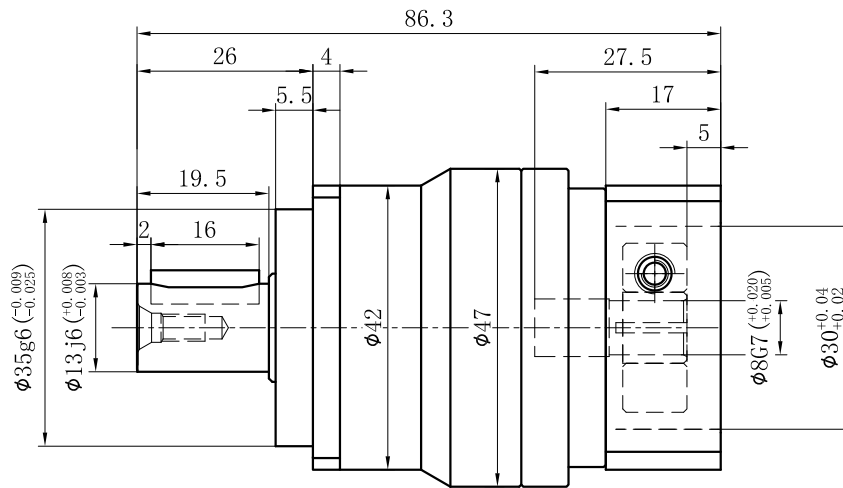
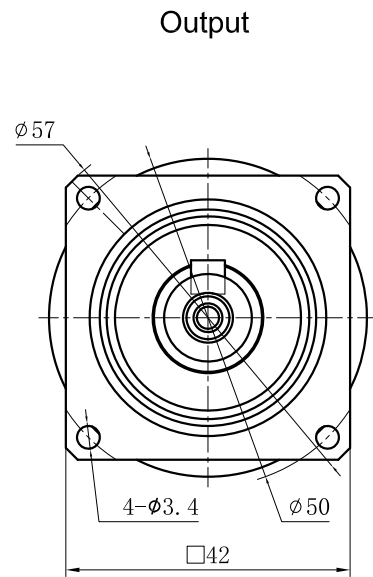


Customer name:



Transmission ratio	(A):1	Mass moments of inertia	(B)Kg.cm ²										
Rated output torque	(C)Nm	Max.Output torque	(D)Nm										
Rated input speed	3000rpm	Max input speed	6000rpm	10	0.03	14	25.2	Sign/Date					
Max.radial force	760N	Max.axial force	380N	7	0.03	19	34.2						
Efficiency	≥ 97%	Operating temperature	-20°~+90°	5	0.03	19	34.2						
Mounting position	Any	Lubrication method	Synthetic grease	4	0.03	17	30.6						
Weight ±3%	--Kg	Service life	20000h	Ratio	A	B	C	D					
Standard backlash	≤ 5 arcmin	Protection class	IP65										
Motor power		Noise level	56dB										
Motor dimensions													
NOTE								Precision Planetary Reducer				GCB042	
												GCB042-L1	
												Shaft Type Precision	

Above specification are for standard reducer, No standard reducer only for reference