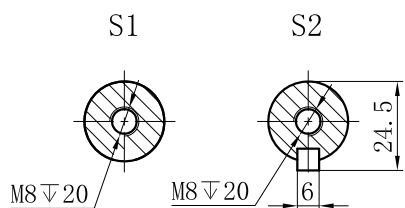
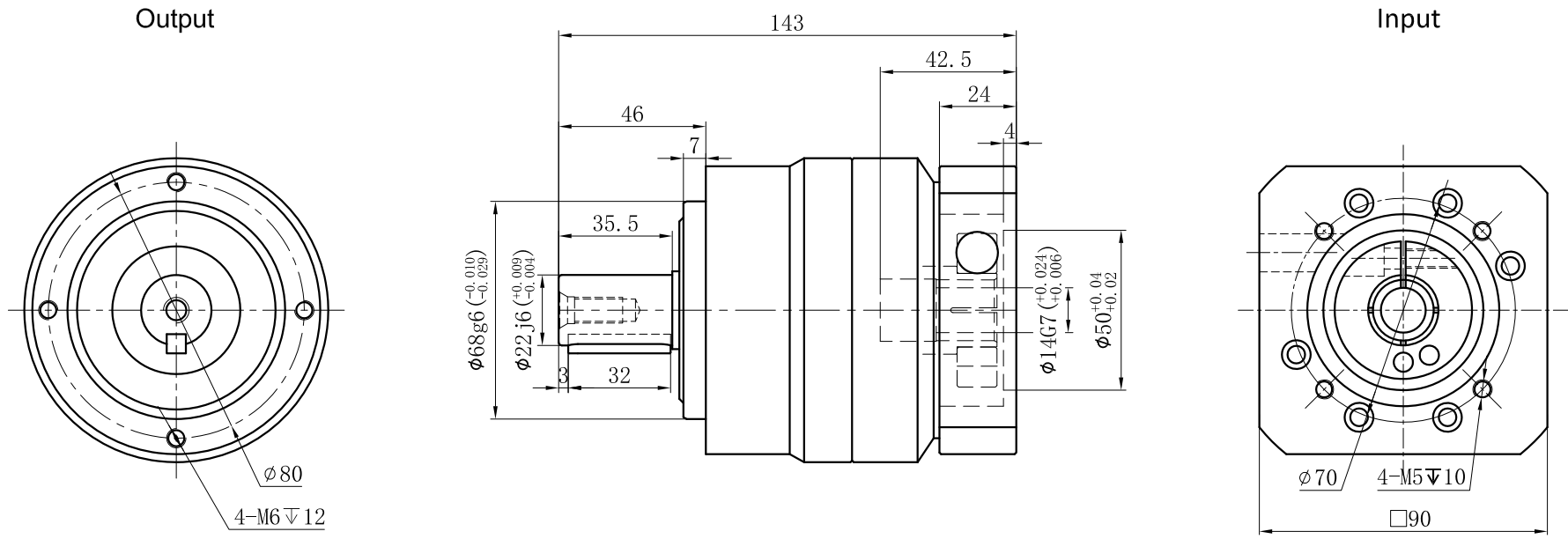


Customer name:



Transmission ratio	(<u> A</u>):1	Mass moments of inertia	(<u> B</u>)Kg.cm ²
Rated output torque	(<u> C</u>)Nm	Max.output torque	(<u> D</u>)Nm
Rated input speed	3000rpm	Max input speed	5000rpm
Max.radial force	3250N	Max.axial force	1625N
Efficiency	$\geq 97\%$	Operating temperature	$-20^{\circ}\sim+90^{\circ}$
Mounting position	Any	Lubrication method	Synthetic grease
Weight $\pm 3\%$	3.6Kg	Service life	20000h
Standard backlash	≤ 5 arcmin	Protection class	IP65
Motor power		Noise level	60dB
Motor dimensions			

	10	0.44	100	180	Sign/Date		8	0.44	120	215
	7	0.45	135	240			6	0.45	140	250
	5	0.47	150	270			3	0.61	100	180
	4	0.48	110	195						
Ratio	A	B	C	D		Ratio	A	B	C	D
Note						Precision planetary reducer	GCE090A			
$\phi 19$ to $\phi 14$	Mark	No.	Sign	Date			GCE090A-L1			
							Shaft Type	Precision		

Above specifications are for standard reducer and may be subject to change without notice.