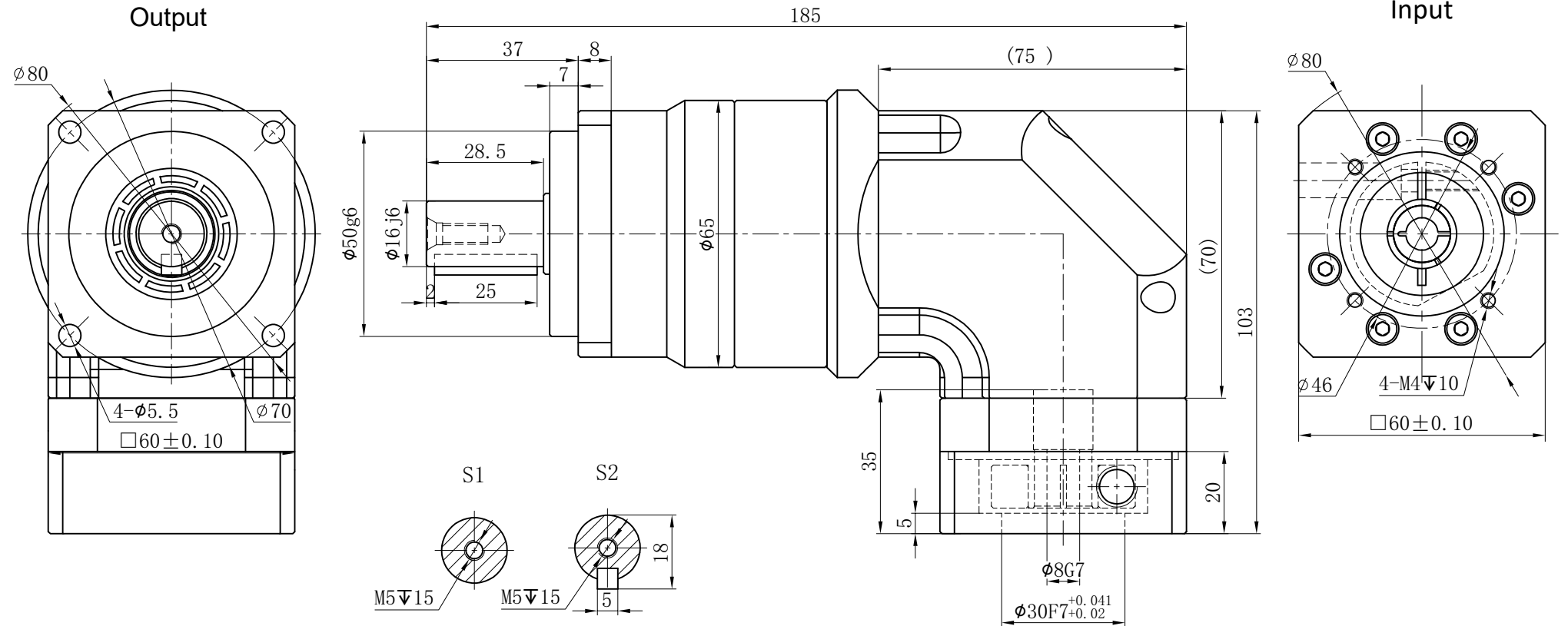


Customer Name:



Transmission Ratio	(A):1	Mass Moments Of Inertia	(B)Kg.cm ²	25	0.09	55	99	Sign/Date	70	0.09	46	82.8		
Rated Output Torque	(C)Nm	Max Output Torque	(D)Nm	30	0.09	50	90		80	0.09	43	77.4		
Rated Input Speed	3000rpm	Max Input Speed	5000rpm	35	0.09	46	82.8		100	0.09	40	72		
Max Radial Force	1450N	Max Axial Force	724N	40	0.09	43	77.4							
Efficiency	≥ 92%	Operating Temperature	-20°~+90°	50	0.09	55	99							
Mounting Position	Any	Lubrication Method	Synthetic grease	60	0.09	50	90	Ratio	A	B	C	D		
Weight ±3%	2.1Kg	Service Life	20000h	Note				Precision Planetary Reducer				GCBR060		
Standard Backlash	≤ 9 arcmin	Protection Class	IP66	$\phi 14$ to $\phi 8$ 	Mark	No.	Sign	Date					GCBR060-L2	
Motor Power	-- KW	Noise Level	66dB										Shaft Type	Precision
Motor Dimensions														

Above specifications are for standard reducer and may be subject to change without notice.