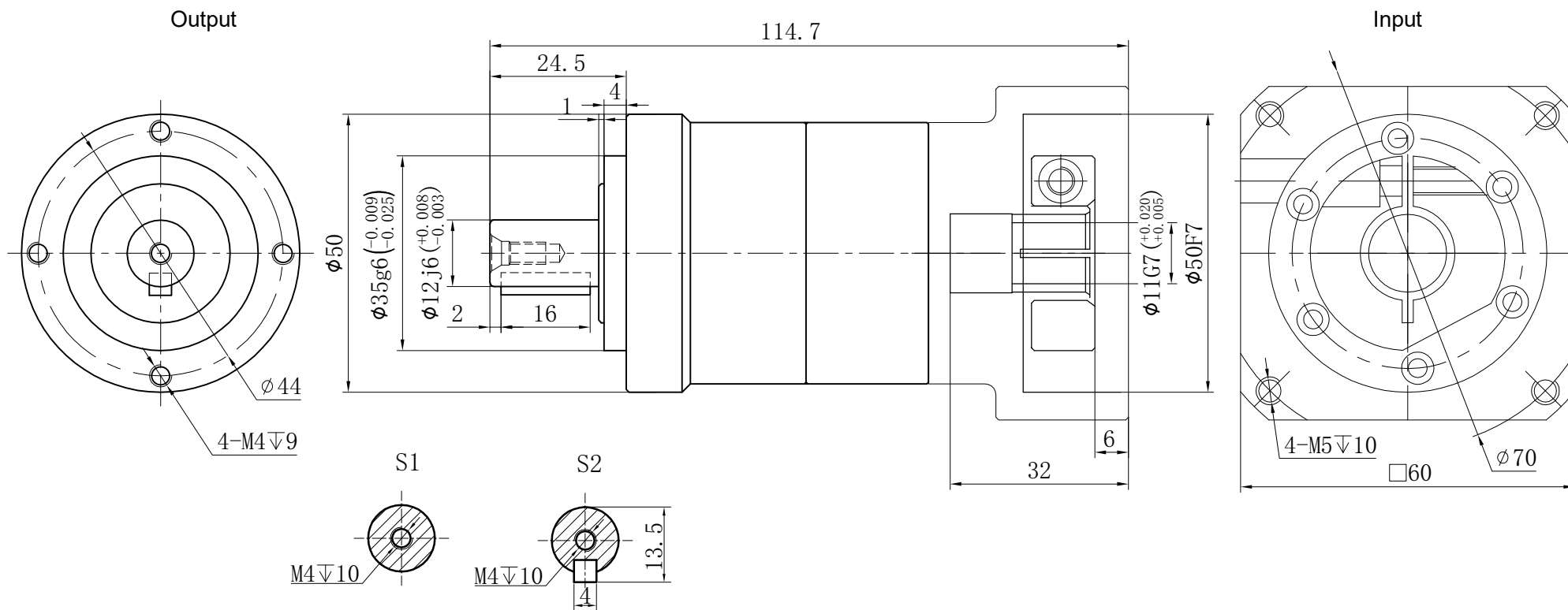


Customer name:



Transmission ratio	( A ):1	Mass moments of inertia	( B )Kg.cm <sup>2</sup>
Rated output torque	( C )Nm	Max.Output torque	( D )Nm
Rated input speed	5000rpm	Max input speed	10000rpm
Max.radial force	702N	Max.axial force	390N
Efficiency	≥ 94%	Operating temperature	-20°~+90°
Mounting position	Any	Lubrication method	Synthetic grease
Weight ±3%	0.9Kg	Service life	20000h
Standard backlash	≤ 7 arcmin	Protection class	IP65
Motor power		Noise level	56dB
Motor dimensions			

	40	0.03	17	30.6	Sign/Date					
	35	0.03	19	34			100	0.03	14	25.2
	25	0.03	22	39.5			70	0.03	19	34
	20	0.03	19	34			50	0.03	22	39.5
Ratio	A	B	C	D		Ratio	A	B	C	D

NOTE				Precision Planetary Reducer		GE050	
Mark	No.	Sign	Date			GE050-L2	
						Shaft Type	Precision

(Above specifications are for standard reducer and may be subject to change without notice. )