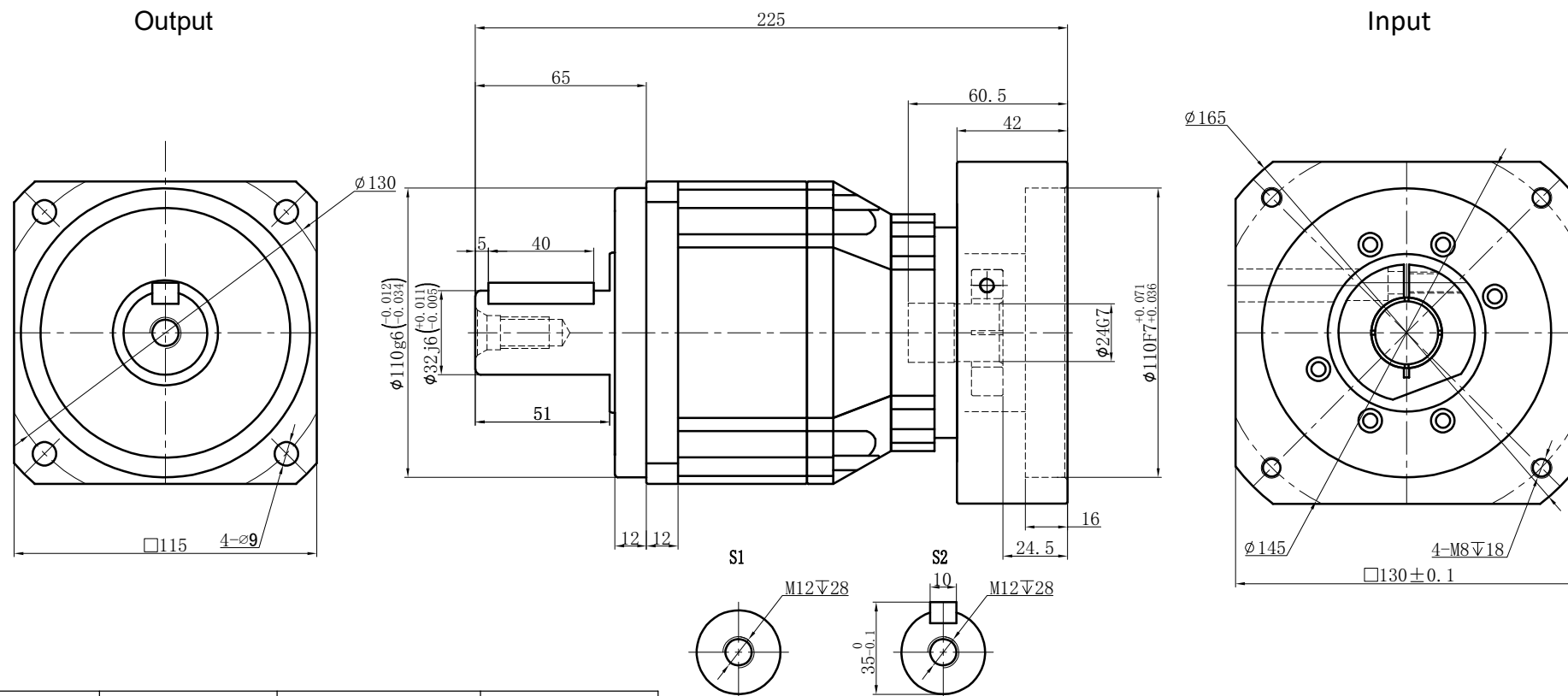


Customer name:



Transmission ratio	(A):1	Mass moments of inertia	(B)Kg.cm ²																										
Rated output torque	(C)Nm	Max.Output torque	(D)Nm	40	0.47	260	468	Sign/Date																					
Rated input speed	4000rpm	Max input speed	8000rpm	35	0.47	300	540			100	0.44	230	414																
Max.radial force	6700N	Max.axial force	3350N	30	0.47	310	558			80	0.44	260	468																
Efficiency	≥ 94%	Operating temperature	-20°~+90°	25	0.47	330	594			70	0.44	300	540																
Mounting position	Any	Lubrication method	Synthetic grease	20	0.47	290	522			60	0.44	310	558																
Weight ±3%	9Kg	Service life	20000h	15	0.47	208	374		50	0.44	330	594																	
Standard backlash	≤ 7 arcmin	Protection class	IP65	Ratio	A	B	C	D	Ratio	A	B	C	D																
Motor power		Noise level	63dB	NOTE				Precision Planetary Reducer				GB115																	
Motor dimensions				<table border="1"> <tr> <td>Mark</td> <td>No.</td> <td>Sign</td> <td>Date</td> </tr> <tr> <td></td> <td></td> <td></td> <td></td> </tr> <tr> <td></td> <td></td> <td></td> <td></td> </tr> <tr> <td></td> <td></td> <td></td> <td></td> </tr> </table>				Mark	No.	Sign	Date																	GB115-L2	
Mark	No.	Sign	Date																										
Shaft Type		Precision																											