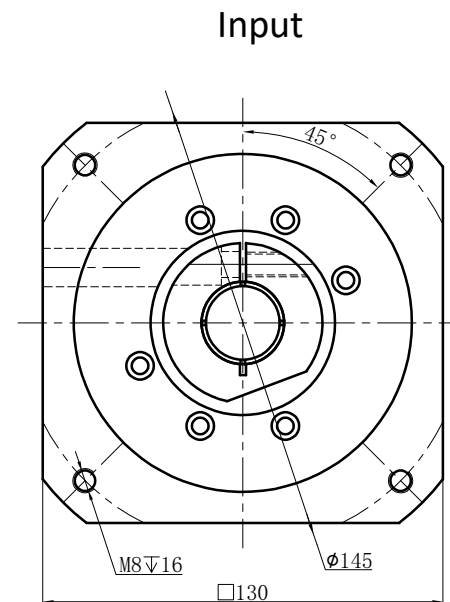
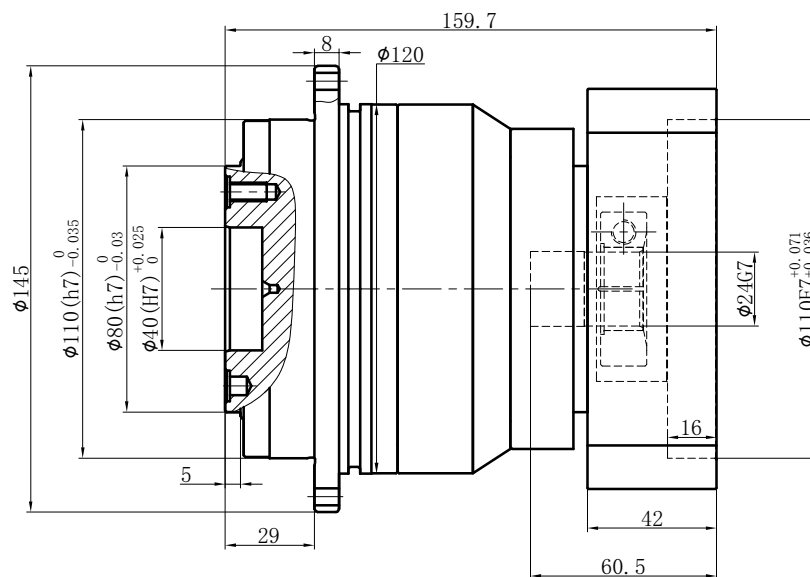
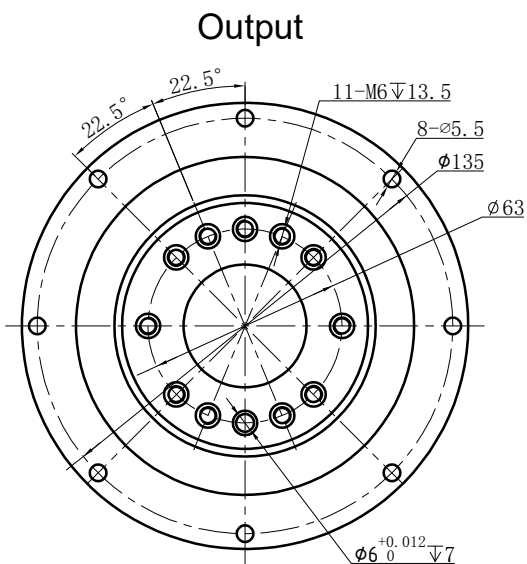


Customer name:



Transmission ratio	(A):1	Mass moments of inertia	(B)Kg.cm ²												
Rated output torque	(C)Nm	Max.Output torque	(D)Nm	40	0.47	270	486	Sign/Date							
Rated input speed	4000rpm	Max input speed	8000rpm	35	0.47	300	540			100	0.44	230	414		
Max Benging Moment	430Nm	Max.axial force	2990N	25	0.47	330	594		70	0.44	300	540			
Efficiency	≥ 94%	Operating temperature	-20°~+90°	20	0.47	270	486		50	0.44	330	594			
Mounting position	Any	Lubrication method	Synthetic grease	Ratio	A	B	C	D	Ratio	A	B	C	D		
Weight ±3%	7.3Kg	Service life	20000h	NOTE								Precision Planetary Reducer		GD110	
Standard backlash	≤ 7 arcmin	Protection class	IP65											GD110-L2	
Motor power		Noise level	60dB											Shaft Type	Precision
Motor dimensions															

Mark	No.	Sign	Date		Precision Planetary Reducer GD110-L2 Shaft Type Precision