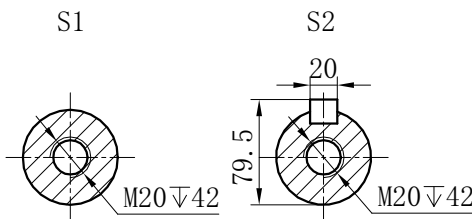
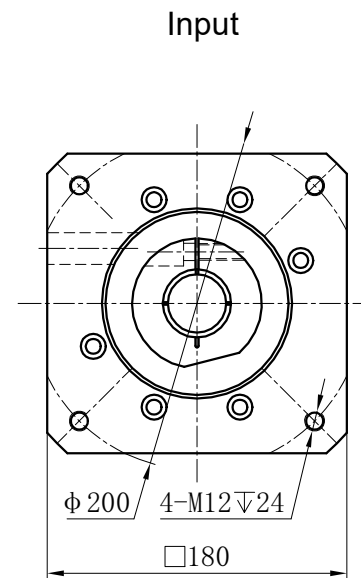
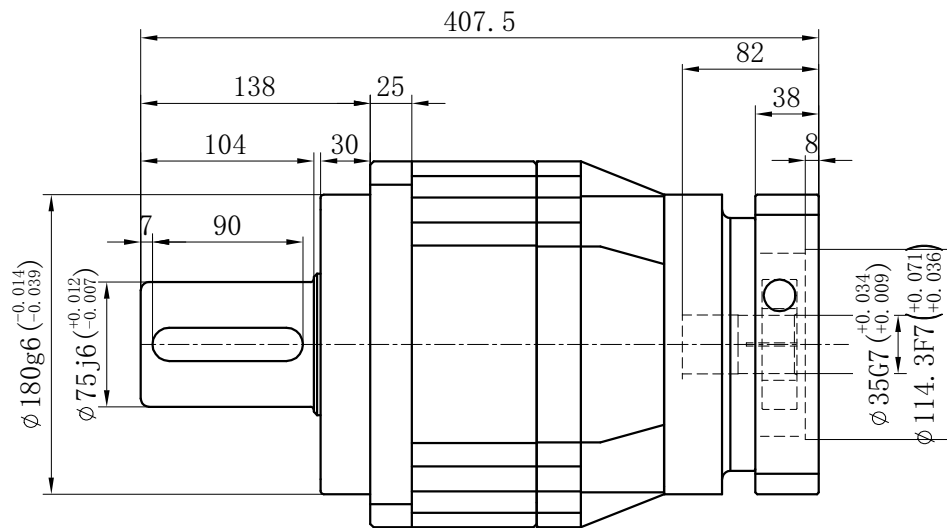
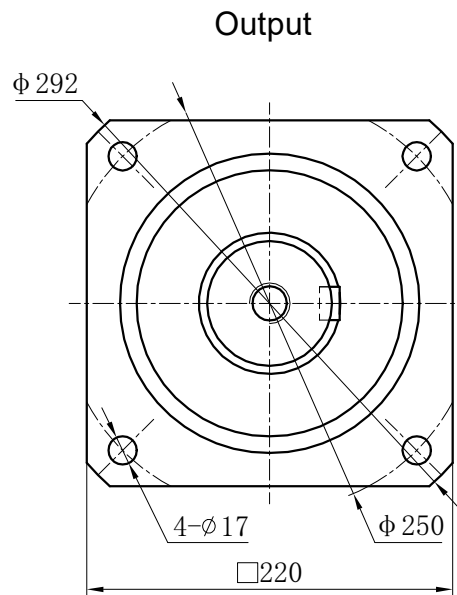


Customer Name:



Transmission ratio	(A):1	Mass moments of inertia	(B)Kg.cm ²										
Rated output torque	(C)Nm	Max.Output torque	(D)Nm	40	23.29	1600	2880	Sign/Date					
Rated input speed	2000rpm	Max input speed	4000rpm	35	23.29	1800	3240		100	22.51	1500	2700	
max.radial force	50000N	max.axial force	25000N	30	23.29	1900	3420		80	22.51	1600	2880	
Efficiency	≥ 94%	Operating temperature	-20°~+90°	25	23.29	2000	3600		70	22.51	1800	3240	
Mounting position	Any	Lubrication method	Synthetic grease	20	23.29	1700	3060		60	22.51	1900	3420	
Weight ±3%	63.5Kg	Service life	20000h	15	23.29	1140	2052	50	22.51	2000	3600		
Standard backlash	≤ 7 arcmin	Protection class	IP65	Ratio	A	B	C	D	Ratio	A	B	C	D
Motor power		Noise level	70dB	Note									
Motor dimensions													

Precision planetary reducer				GB220	
Mark				No.	
Sign				Date	
DRAW					
CHEC					
APPR					
RULE					
				GB220-L2	
				Shaft Type	Precision

Above specifications are for standard reducer and may be subject to change without notice.